

Catalogue

Video Intercom Kits



THE FIRST VIDEO
INTERCOM LINE
CAME
BRANDED



CAME

4 COMPLETE KITS FOR INSTALLATIONS QUICK AND EASY

The new Came video intercom kits are the ideal solution for single and multi-unit accommodation.

Benefit for the installer:

- Simple wiring with only 2 wires.
- Features for intercommunication.
- Pre-programmed kit for instant operation of the system.

Benefit for the user:

- Elegant, and practical outdoor installation with colour camera.
- Intercom speaker panel or handset for every need.

Unico Kit

page 04/07

Bianca kit

page 08/11

Visio Kit

page 12/15

Early Kit

page 16/19

Unico Kit



001CK0005

single unit accommodation



001CK0006

multi unit accommodation

Bianca kit



001CK0002

video version



001CK0001

audio version

Visio Kit



001CK0008

multi unit accommodation

Eary Kit



001CK0010

video version



001CK0009

audio version

Kit Unico



**An ideal solution bringing elegance
and safety to your home.**

Unico

RECESSED VIDEO INTERCOM



- SERIES INTERCOM MODULE
- SWIVEL DISPLAY
- HIGH FIDELITY AUDIO

Unico is the recessed intercom with 3.5" colour display that guarantees high picture quality and, thanks to the high fidelity audio, the highest acoustic quality speaker system. With intercom* module series and swivel display for excellent viewing angle.

(* The function is available via the optional intercom switch 001DC001AC).

Technical features

Ring tone volume adjustment
 Brightness adjustment
 Colour saturation adjustment
 Open door (Green LED)
 Mute (Red LED)
 Enable/Disable communication (Red LED)
 Activation/Selection external point
 AUX 1 button for stair light centralised auxiliary command
 AUX 2 call concierge (Red LED)
 Ring tone off (Red LED)

In Addition

EXTERNAL POINT VANDAL-PROOF INTERCOM

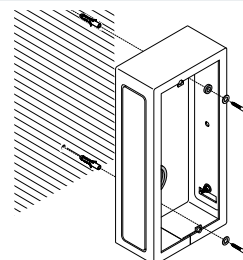


- MAXIMUM ACCESS SECURITY
- MAXIMUM RESISTANCE TO IMPACT AND TAMPERING WITH
- VANDAL-PROOF STRUCTURE

In addition, the external video intercom point combines maximum functionality to the more advanced aesthetic values of contemporary design. Compact and slim, 22 mm thick and recessed, it is practical and easy to install.

MAXIMUM WATER-PROOFING
 External point is additionally constructed to be durable; it was in fact designed with a protection factor against water and humidity of IP54.

WALL-MOUNTED INSTALLATION
 Thanks to the 001DC00OLTRE01 box, Oltrecan also be wall-mounted, always offering the maximum adaptability to every architectural context.



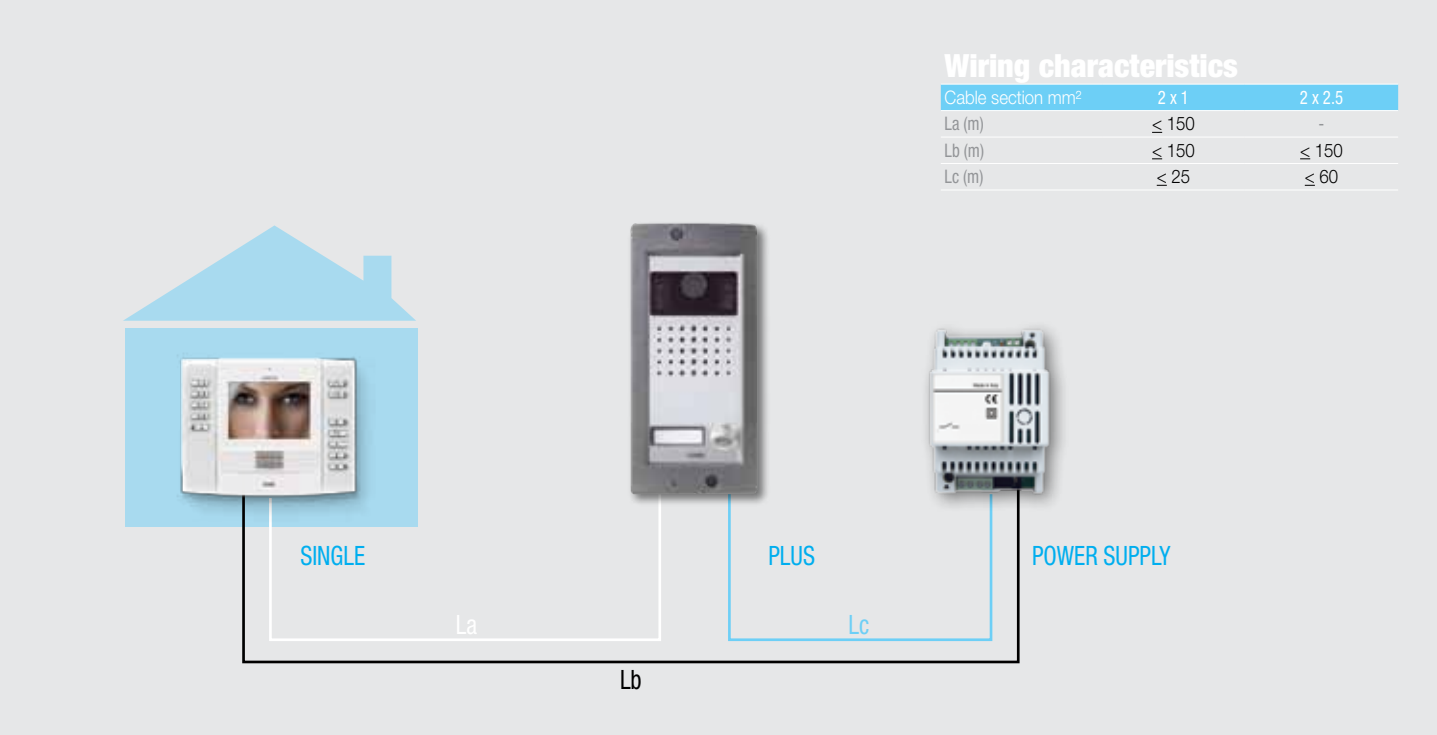
Technical features

Stainless steel plate and polycarbonate covering of a thickness of 4 mm
 Recessed installation
 Shatter-proof polycarbonate screen
 Safe and durable buttons

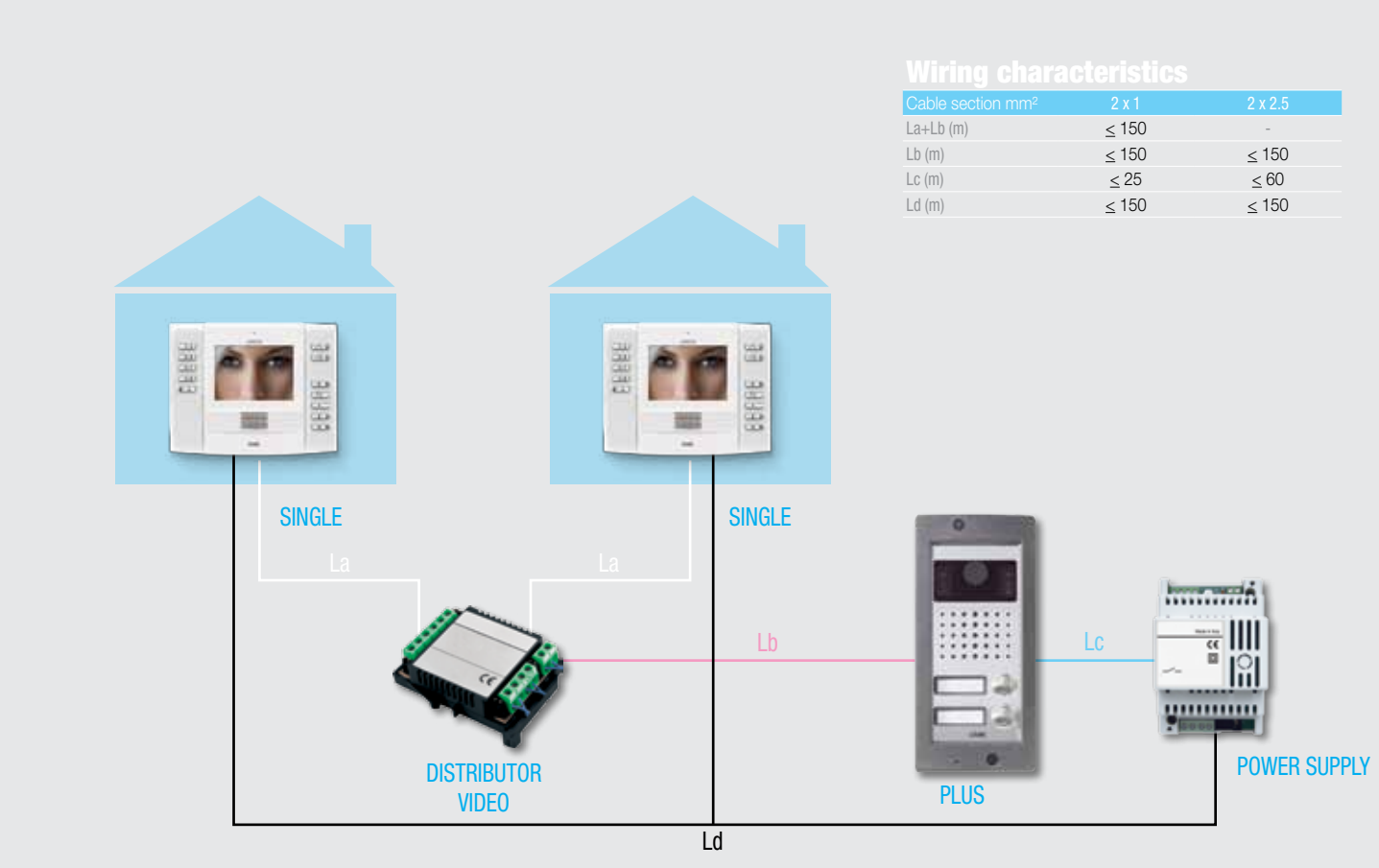
EXAMPLES OF INSTALLATION

With the Came Unico video intercom kit it is possible to have both single unit and multi unit accommodation systems thanks to pre-programming of the kit.
It is also possible to have intercom systems between internal receivers through a special switch.

Single unit wiring diagram



Multi unit wiring diagram



Videointercom kit	
001 CK0005	Single unit accommodation video intercom kit composed of: no. 1 Unico internal receiver, no. 1 Oltre external point, no. 1 button, no. 1 power supply and no. 1 actuator with no. 2 relays.
001 CK0006	"Multi unit accommodation video intercom kit composed of: no. 2 Unico internal receivers, no. 1 Oltre external point, no. 2 buttons, no. 1 power supply and no. 1 actuator with no. 2 relaysno. and 1 video distributor."
Video intercom	
001 DC01UNICO	Video intercom with speaker (white) with 3.5" colour monitor.
External point	
001 DC01OLTRE	External vandal-proof video intercom point with 1 button.
001 DC02PLUS	External vandal-proof video intercom with 2 buttons
Accessories	
001 DC000LTRE01	Wallbox for Oltre external point.
001 DC00UNICO01	Wall securing kitfor Unico internal receiver.
001 DC00UNICO02	Blackcover for Unico internal receiver.
001 DC001AC	Intercommunicating switch.
001 DC002AC	Additionalpower supply.
001 DC003AC	Recessedbox for Oltre external point.
001 DC004AC	Recessedbox for Unico video intercom.
001 DC005AC	Remote actuator with no. 2 relays.
001 DC006AC	4-output video distributor.

Unico dimensions

(mm)	L	H	P
VIDEO INTERCOM			
	158.8	124.8	17.5
RECESSED BOX			
	130	114	53.5



Oltre Dimensions

(mm)	L	H	P
PLATE			
	99.8	207	27
RECESSED BOX			
	90	198	51.5



The 001DC00UNICO01 kit enables wall-mounting on 3 DIN module boxes, both in a horizontal and vertical point and on round boxes of diameter of 60 mm.

The cover is also available in black (001DC00UNICO02).

Kit Blanca



**The kit that combines elegance indoors
and safety external point.**

Bianca

WALL-MOUNTED INTERCOM AND VIDEO INTERCOM



- EXCELLENT AUDIO-VIDEO QUALITY
- EASY TO USE THANKS TO THE BLUE BACK LIGHT OF THE CENTRAL LIGHT RING

Bianca wall-mounted intercom, elegant with its made-in-Italy design and advanced technology.

The Bianca video intercom version has a 3.5" colour LCD display and audio speaker, excellent video and audio quality at extremely low consumption. The Bianca line is distinguished by character and elegance with its smooth lines as well as the ergonomic control ring that encapsulates all the functions in one perfect circle.

Technical features

Audio Speaker
Door Opening System
Audio On/Off in conversation
Auto insert video of external points with cyclic selection
Two commands for auxiliary function activation
Eight calls for intercommunicating purposes (two on the intercom version)
"Panic" button to request concierge assistance
Ring tone off with light indicator
Ring tone volume adjustment on 3 levels (low, medium and high for the video intercom version), on 2 levels (low and normal for the intercom version)
Brightness adjustment (only for the video intercom version)
Colour saturation adjustment (only for the video intercom version)
Programmable tunes for calls from the external point and calls from landings
Differentiated tunes for calls from intercommunicating or concierge
Programming of the number of rings for calls from the external point
Video transfer feature (ping pong) between contemporaneous call receivers

Placo

MONOLITHIC EXTERNAL POSITION



- UNPARALLELED QUALITY.
- MAXIMUM PROTECTION AGAINST WATER AND KNOCKS

Placo is the coloured monolithic external point, with wiring system with only 2 wires.

Compact and slim (30mm thickness on wall), it adapts perfectly to any environment, thanks to a design of soft lines and elegant finishing in brushed stainless steel.

"WIDE ANGLE" SYSTEM

Placo is equipped with a "Wide eyes" camera system providing very wide external area viewing (for example, from a distance of half a meter from the plate, an area of 86 cm in width and 57 cm in height is visible).
Horizontal opening angle of 94°
Vertical opening angle of 77°



Technical features

30 mm thickness on wall
Finished in brushed stainless steel
Series intercom function without additional power supplies.
Can be increased up to 4 calls
Wall-mounted or recessed installation

EXAMPLES OF INSTALLATION

The example below shows a simple single unit accommodation system composed of an external point and a receiver. The external point is supplied by a local power supply. To activate auxiliary functions to the system, it can be connected to an external relay module.

Video intercom for single unit accommodation

Wiring characteristics

Cable section mm²	2 x 1	2 x 2.5
La (m)	≤ 100	-
Lc (m)	≤ 25	≤ 60

Cables distances

VIDEO INTERCOM KIT

Wiring characteristics

Cable section mm²	2 x 1	UTP/CAT 5	2 x 2.5
La+Lb(m)	≤ 100	≤ 100	-
Lc (m)	≤ 25	-	≤ 60

Wiring characteristics

Cable section mm²	2 x 1	UTP/CAT 5
Master max. number	3	1
Slave max. number	5	2

INTERCOM KIT

Wiring characteristics

Cable section mm²	2 x 1	UTP/CAT 5	2 x 2.5
La (m)	≤ 250	≤ 250	-
Lc (m)	≤ 25	-	≤ 60

Video intercom kit	
001 CK0002	Singleunit accommodation video intercom kit composed of: no. 1 Bianca video intercom internal receiver, no. 1 Placo external point, no. 1 DOUBLE HEIGHT button, no. 1 power supply
Audio Intercom kit	
001 CK0001	Singleunit accommodation intercom kit composed of: no. 1 Bianca intercom internal receiver, no. 1 Placo external point, no. 1 DOUBLE HEIGHT button, no. 1 power supply
Video intercom	
001 CS2BNCO	Vid eointercom speaker with "3.5" colour LCD display, wall-mounted, white.
Audio intercom	
001 CS1BNCO	Audio intercom with speaker with mounting bracket included, wall-mounting, white.
Videointercoms external positions	
001 CS2PLCO	Placo external point video intercom.
Audiointercoms external positions	
001 CS1PLCO	Placo external point intercom
Accessories	
001 DC002AC	Additionalpower supply.
001 DC005AC	Remote actuator with no. 2 relays.
001 DC006AC	4-output video distributor.
001 DC00EGMA11	One button.
001 DC00EGMA12	Doubleheight button
001 DC00EGMA13	Double button.
001 DC00PLAC001	Wallcover.
001 DC00EGMA15	Singlecover.
001 DC00PLAC002	Recessedframe.
001 DC00PLAC003	Recessedbox.

Notes: the BIANCA-PLACO audio and video intercom system kits are also available in the version without power supply (cod. 001CK0003 - 001CK0004)

Bianca Dimensions

(mm)	L	H	P
VIDEO INTERCOM	145	170	30.9
INTERCOM	110	170	30.9

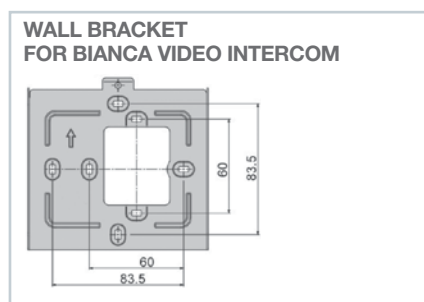


Placo Dimensions

(mm)	L	H	P
WALL-MOUNTED	99	207	30
RECESSED*	135	243	6.5



(*) Recessed box: 127x235x54.5 mm.



Kit
Visio



Discreet and elegant for any residential environment.

Visio

RECESSED VIDEO INTERCOM SPEAKER



- WIDE DISPLAY WITH TOUCH SCREEN KEYS
- EASY TO USE

Visio, the latest generation recessed video intercom 4.3" 16:9 display and Touch Screen keys. It has advanced video intercom features such as the video intercom messaging system and the list of concierge calls.

Technical features

Audio speaker
Door Opening System
Mute in conversation
Auto insert video of external positions with cyclic selection
Two immediate commands for auxiliary function activation
Ring tone off with light indicator
10 calls for intercommunicating functions
"Panic" key to request concierge assistance
Programmable tunes
Brightness, contrast and colour saturation adjustment
Video intercom messaging service (10 audio messages + snapshot)
Image zoom
Auto answer function
concierge call (Aux2)
"Doctor" function (automatic door opening with time programming)

Enigma

SLIMLINE EXTERNAL POINT

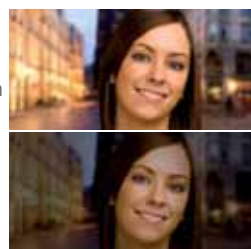


- UNPARALLELED QUALITY.
- MAXIMUM PROTECTION AGAINST WATER AND KNOCKS

Enigma is the only slimline external point that stands out due to its elegance and minimum thickness. Thanks to its attractive design, the Came external point skilfully combines the discretion of 2 millimetres of thickness with sought after and contemporary aesthetics.

COLOUR PERFECT IMAGES IN ALL CONDITIONS AND MAXIMUM VIDEO QUALITY

Enigma is equipped with latest generation sensors that integrate sophisticated digital algorithms for image processing to ensure unmatched video quality in all environmental conditions, day and night.



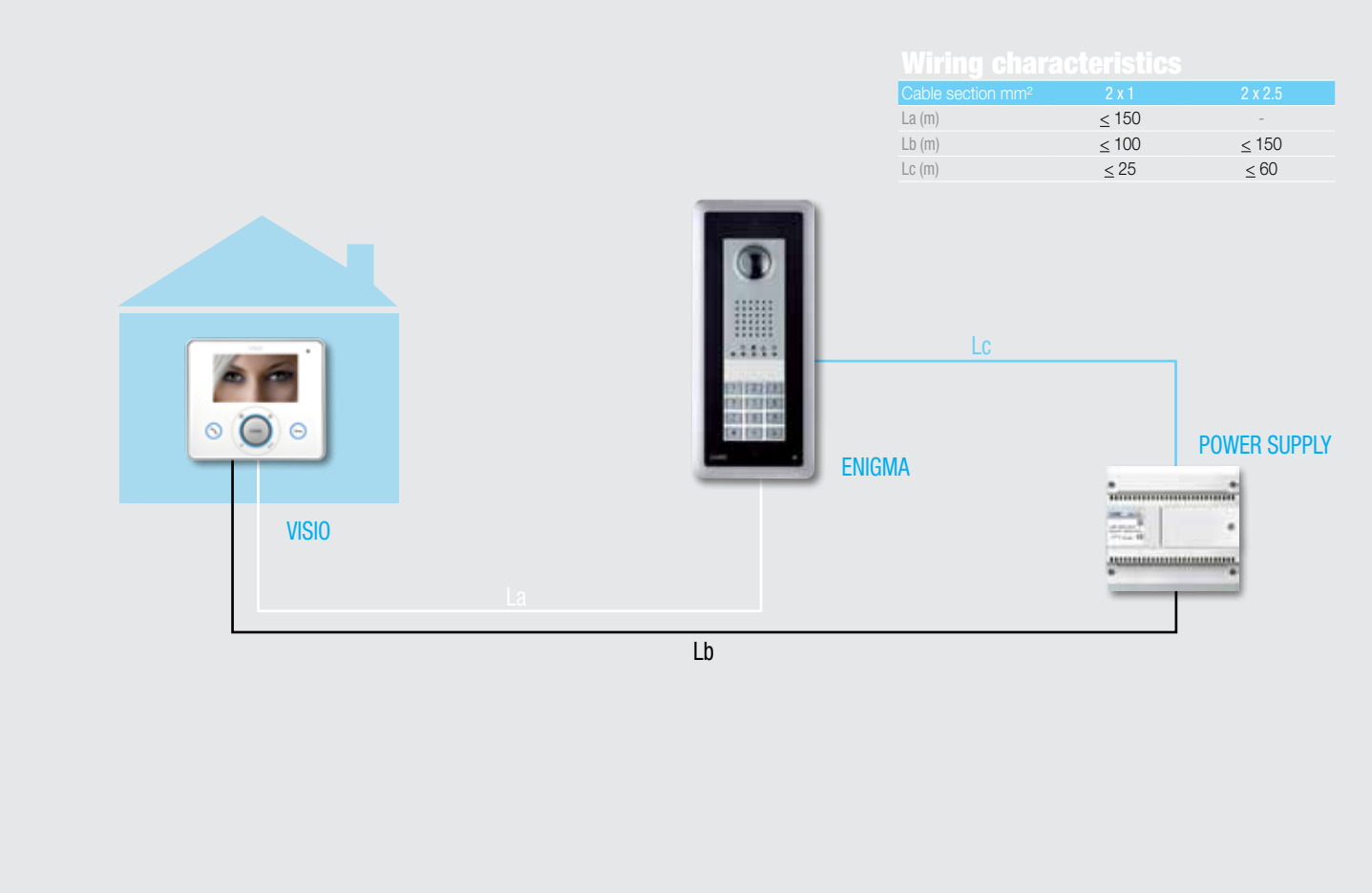
Technical features

Thickness: 2 mm recessed, and 25 mm wall-mounted
Metallic grey or light grey finishes
Wall-mounted or recessed installation
LEDs of different colours and immediately recognisable serigraphs to communicate state
Available with access control accessory (keyboard included in kit)

EXAMPLES OF INSTALLATION

The example below shows a simple single unit accommodation system composed of an external point and a receiver. The external point is supplied by a local power supply. To activate auxiliary functions to the system, it can be connected to an external relay module.

Single unit wiring diagram



Video intercom kit	
001 CK0008	Single unit video intercom kit composed of: no. 1 Visio internal video intercom receiver, no. 1 Enigma external position with metal body and access control keypad module, no. 1 power supply and no. 1 actuator with no. 2 relays.
Video intercom	
001 DC01VISIOW	Video intercom speaker with "4.3" 16:9 colour LCD touch screen display, recessed installation, white.
Video intercoms external positions	
001 DC01ENIGMA	Colour wall-mounted external point video intercom with metal body and access control keypad module.
001 DC02ENIGMA	Colour wall-mounted external point video intercom with light grey body and access control keypad module.
Accessories	
001 DC00EGMA01	Additional keypad for Placo external point.
001 DC00EGMA02	Access control keypad module metal grey.
001 DC00EGMA03	Access control keypad module light grey.
001 DC00EGMA04	Information module.
001 DC00EGMA05	Front plate, aluminium, matte black.
001 DC00EGMA06	Front plate, aluminium, aluminium colour.
001 DC00EGMA07	Frame with keypad cover.
001 DC00EGMA08	Recessed frame, metallic grey.
001 DC00EGMA09	Recessed frame light grey.
001 DC00EGMA10	Recessed box.
001 DC00EGMA14	Single cover metallic grey.
001 DC00EGMA15	Single cover light grey.
001 DC00EGMA16	Double height cover metallic grey.
001 DC00EGMA17	Double height cover grey.
001 DC00VISI001	Visio recessed box.
001 DC00VISI002	Visio wall support for the hearing impaired.

Visio Dimensions

(mm)	L	H	P
RECESSED VERSION			
	158	138	32
WALL-MOUNTED VERSION			
	158	138	2



Enigma Dimensions

(mm)	L	H	P
WALL-MOUNTING			
	99	254	25
RECESSED INSTALLATION*			
	127	281	2*



(*) Recessed box: depth 54.5 mm; projection from wall 2 mm.
DSI: 127x294x54.5 mm.

Kit Eary



Simple and functional for traditionalists

Eary

WALL-MOUNTED VIDEO INTERCOM AND INTERCOM WITH HANDSET



- 3.5" COLOUR LCD DISPLAY
- WALL-MOUNTING WITH DEDICATED SUPPORT

Eary is the wall-mounted model with handset of the new line of CAME video intercoms. Eary is available in the intercom and colour video intercom versions. IT IS CHARACTERISED BY ITS GREAT ease of use, functionality, the purity of the lines of the design and continuity of style with the other CAME new generation models.

MASTER/SLAVE FUNCTION

In the event of simultaneous call, the audio/video communication on the internal receiver will be activated from which it is possible to answer with either main (Master) or secondary (Slave), without the aid of new power supplies and cables. In the event of simultaneous call, only the audio/video communication on the Master receiver will be enabled.

Technical features

Door Opening System
Auto insert video of external positions with cyclic selection
Ring tone off with light indicator
Master/Slave Function
Ping-pong video function
Colour saturation adjustment
Brightness adjustment
Ring tone volume adjustment
Ring tone off with light indicator
Two commands for auxiliary function activation

Placo

MONOLITHIC EXTERNAL POSITION



- UNPARALLELED QUALITY.
- MAXIMUM PROTECTION AGAINST WATER AND KNOCKS

Placo is the coloured monolithic external point, with wiring system with only 2 wires. Compact and slim (30mm thickness on wall), it adapts perfectly to any environment, thanks to a design of soft lines and elegant finishing in brushed stainless steel.

"WIDE ANGLE" SYSTEM

Placo is equipped with a "Wide eyes" camera system providing very wide external area viewing (for example, from a distance of half a meter from the plate an area of 86 cm in width and 57 cm in height is visible).
Horizontal opening angle of 94°
Vertical opening angle of 77°



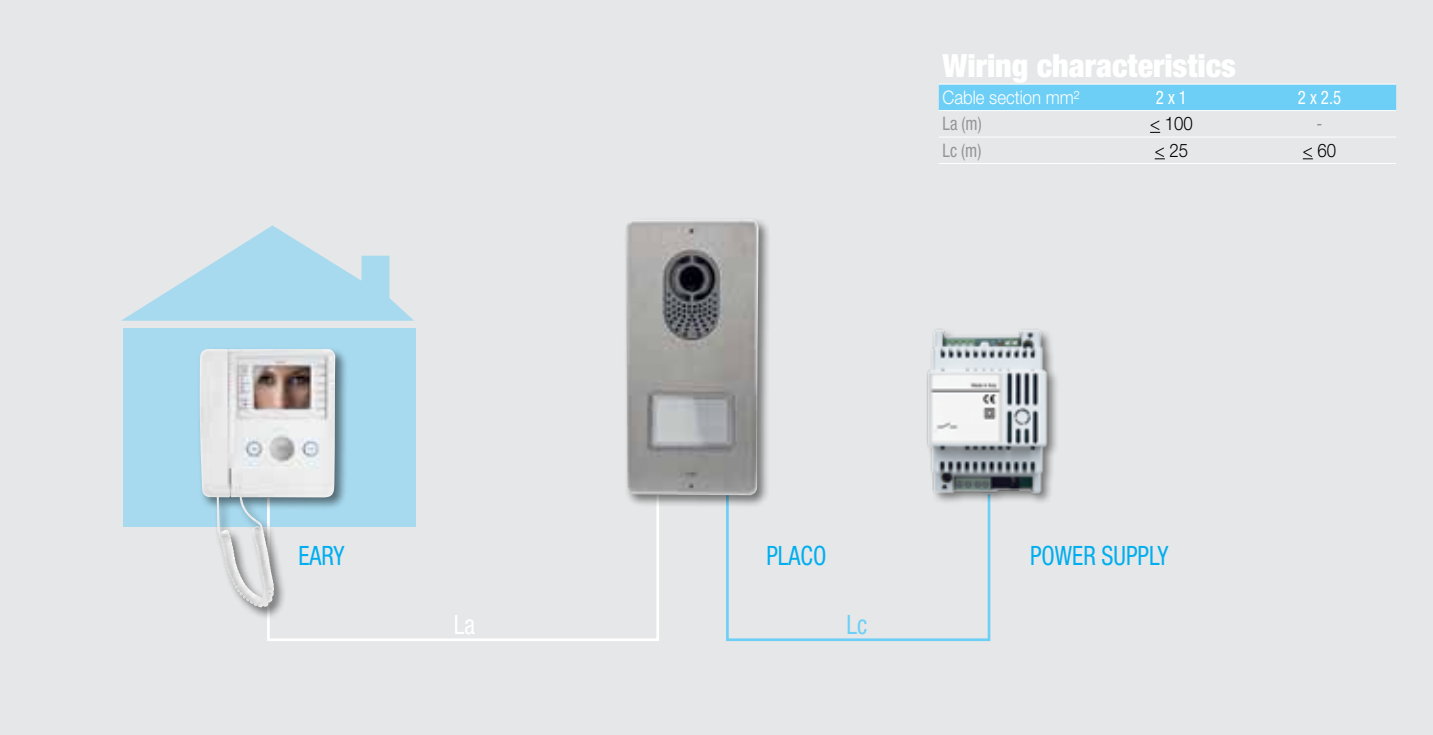
Technical features

30 mm thickness on wall
Finished in brushed stainless steel
Series intercom function without additional power supplies.
Can be increased up to 4 calls
Wall-mounted or recessed installation

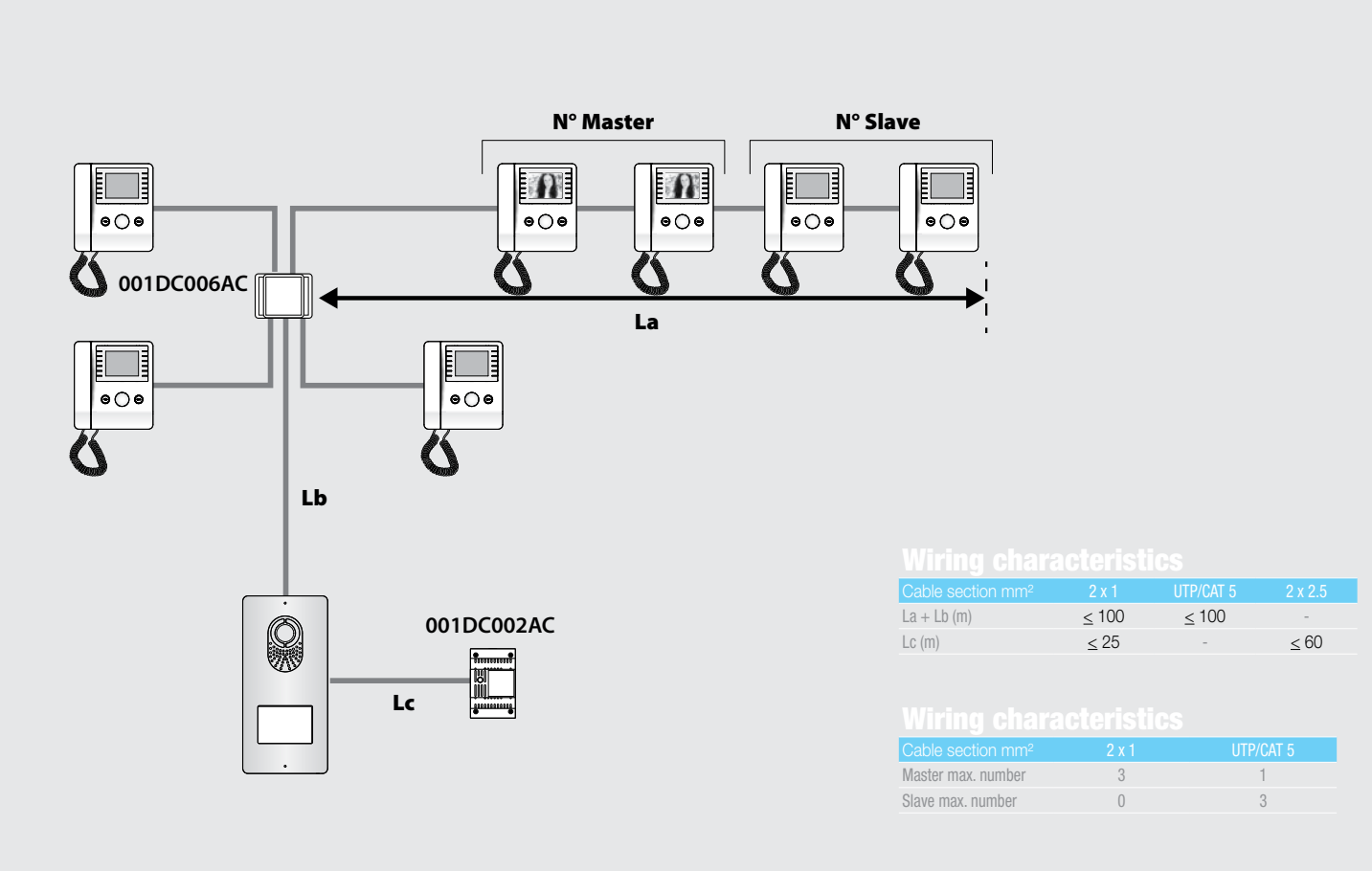
EXAMPLES OF INSTALLATION

The example below shows a simple single unit accommodation system composed of an external point and a receiver. The external point is supplied by a local power supply. To activate auxiliary functions to the system, it can be connected to an external relay module.

Single unit wiring diagram




Multi unit wiring diagram



Video intercom kit	
001 CK0010	Singleunit accommodation video intercom kit composed of: no. 1 Eary video intercom internal receiver, no. 1 Placo external point, no. 1 button, no. 1 power supply and no. 1 actuator with no. 2 relays.
Audio Intercom kit	
001 CK0009	Singleunit accommodation intercom kit composed of: no. 1 Eary intercom internal receiver, no. 1 Placo external point, no. 1 button, no. 1 power supply and no. 1 actuator with no. 2 relays.
Video intercom	
001 DC01EARY	Vid eo intercom with handset with 3.5" colour LCD display, wall-mounting, white.
Audio Intercom	
001 DC02EARY	Handsetintercom with mounting bracket included, wall-mounting, white
Videointercoms external positions	
001 CS2PLC0	Placo external point video intercom.
Audiointercoms external positions	
001 CS1PLC0	Placo external point intercom
Accessories	
001 DC002AC	Additionalpower supply.
001 DC005AC	Remote actuator with no. 2 relays.
001 DC006AC	4-output video distributor.
001 DC00EGMA11	One button.
001 DC00EGMA12	Doubleheight button
001 DC00EGMA13	Double button.
001 DC00PLAC001	Wallcover.
001 DC00PLAC002	Recessedframe.
001 DC00PLC003	Recessedbox.


Eary Dimensions

(mm)	L	H	P
VIDEO INTERCOM			
	170	190	39
INTERCOM			
	102	190	39



Placo Dimensions

(mm)	L	H	P
WALL-MOUNTED			
	99	207	30
RECESSED*			
	135	243	6.5



(*) Recessed box: 127x235x54.5 mm.



GARANZIA QUALITÀ ORIGINALE

Came products
are entirely engineered
and built in ITALY



Came Cancelli Automatici S.p.A.
is Quality and
Environmentally certified
UNI EN ISO 9001
UNI EN ISO 14001

Official Partner



MILANO 2015
FEEDING THE PLANET
ENERGY FOR LIFE

Came North East
Udine – Italy

Came South
Naples – Italy

Came United Kingdom
Nottingham - UK

Came France
Paris - France

Came Spain
Madrid - Spain

Came Portugal
Lisbon - Portugal

Came Seefeld
Berlin - Germany

Came Korntal
Stuttgart - Germany

Came Group Benelux
Lessines - Belgium

Came Nederland
Breda - Netherlands

Came Poland Sp. z o.o.
Warszawa - Polska

Came Americas Automation
Miami - USA

Came Adriatic
Kastav – Croatia

Came do Brasil Serviços de Automação
São Paulo – Brazil

Came Automatismos de Mexico
Mexico City – Mexico

Came Rus
Moscow - Russia

Came Gulf
Dubai - U. A. E.

Came India Automation Solutions
New Delhi - India

TRI-Bpt Automation
Germiston - South Africa



CAME

Came
cancelli automatici
S.p.a.

Via Martiri della Libertà, 15
Dosson di Casier - Treviso - Italy
tel. (+39) 0422 4940
fax (+39) 0422 4941
www.came.com - info@came.it